

C801/2 Mandible Street Alexandria NSW

1 1

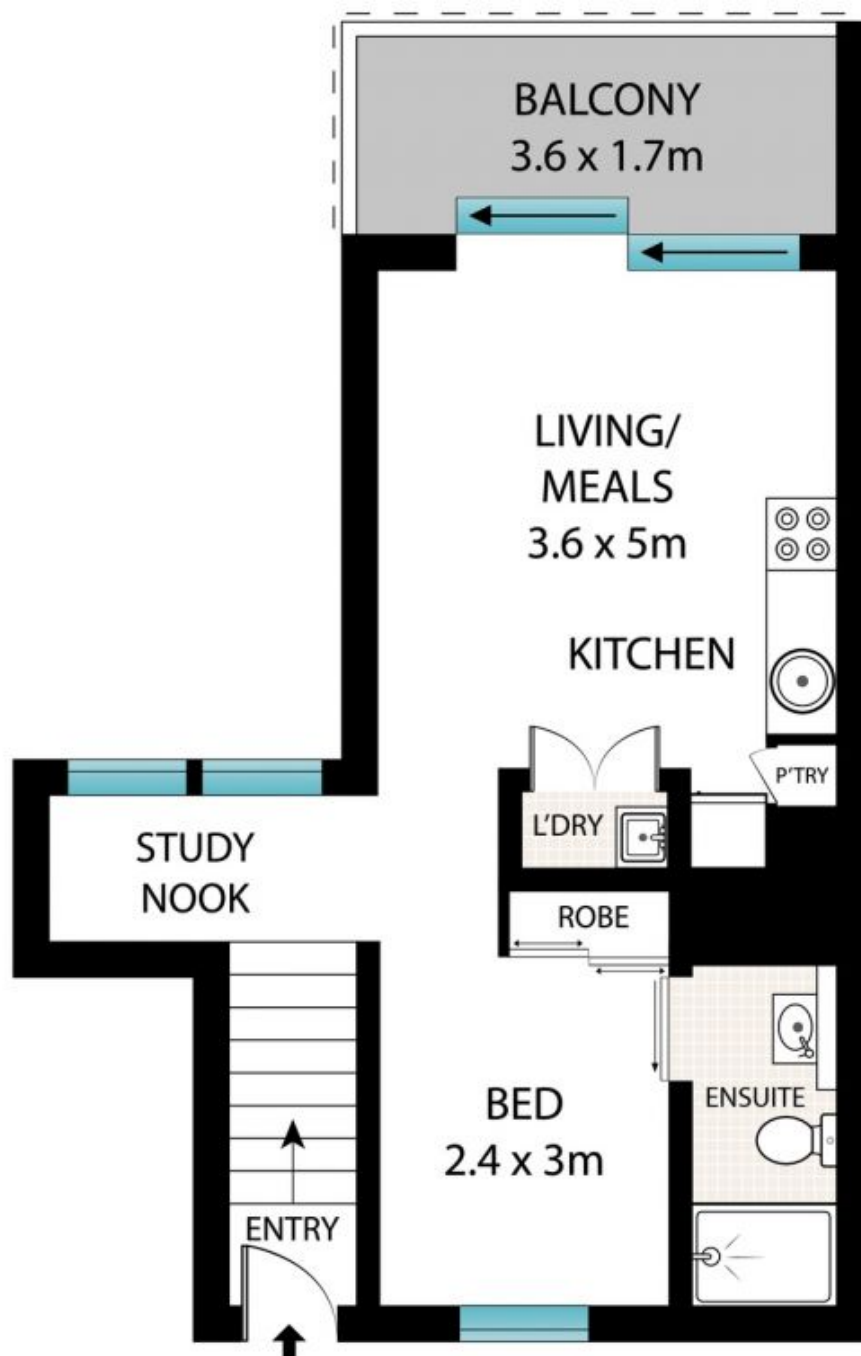
Open the door to this top floor unit and enter into a bright and sunny little haven with gleaming timber floors and an expansive outlook over the pool and neighbourhood towers - magical by night! Huge outdoor pool. Excellent security, swipe required for entry to building and also to your floor. This is the perfect size for a single or couple.

View : <https://www.shearerproperty.com.au/lease/nsw/eastern-suburbs/alexandria/residential/apartment/750477>



Sue Shearer
02 9310 1801

- * Easy-care 44sqm with polished timber floors
- * Excellent top floor position brings in light and breezes
- * Mirrored wardrobe in bedroom, study nook
- * Full width balcony with views over the resort pool
- * Split system air conditioning, lift to your floor
- * Own internal laundry with dryer
- * Gorgeous hotel style swimming pool, cafe on site, visitors parking
- * Perfectly located for transit, transport, rail



LEVEL EIGHT/
TOP FLOOR



Scale in metres. Indicative only. Dimensions are approximate. All information contained herein is gathered from sources we believe to be reliable. However, we cannot guarantee its accuracy and interested persons should rely on their own enquiries.

C801/2 Mandible Street, Alexandria



shearer
property